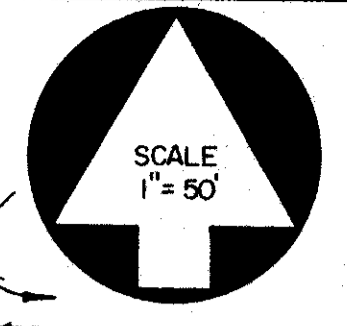


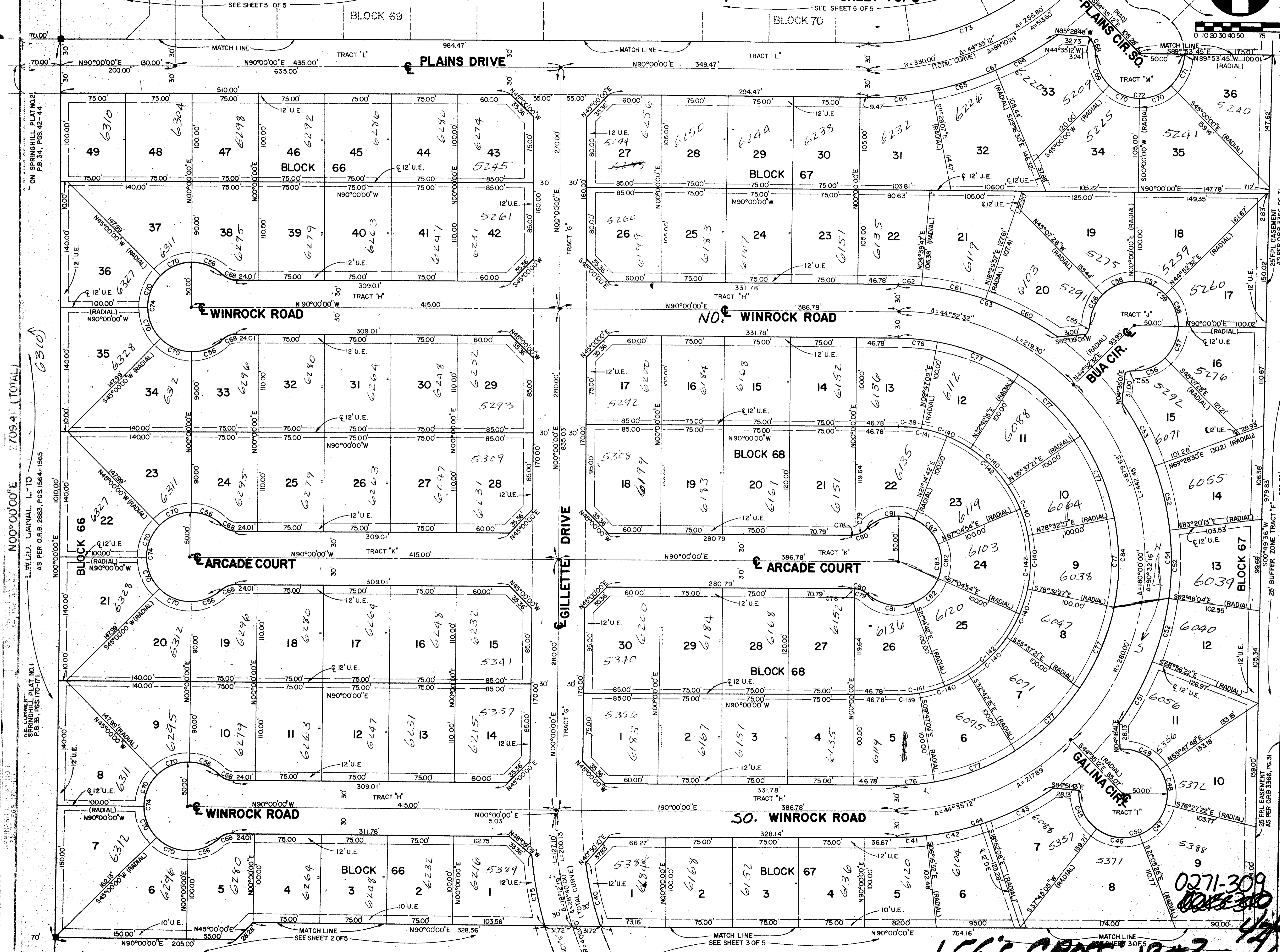
42/4

# LEE'S CROSSING PLAT NO. 2 (P.U.D.)

LYING IN THE EAST ONE-HALF OF SECTION 34, TOWNSHIP 44 SOUTH, RANGE 42 EAST, PALM BEACH COUNTY, FLORIDA. JANUARY, 1981



4



STATE OF FLORIDA  
COUNTY OF PALM BEACH  
THIS PLAT WAS FILED FOR RECORD AT THIS DAY OF JANUARY 1981 AND DULY RECORDED IN PLAT BOOK ON PAGES AND BY JOHN B. DUNKLE, CLERK CIRCUIT COURT DC.

UNPLATTED

C. NO.	RADIUS	DELTA	ARC
C 40	370.00'	11°24'44"	73.70'
C 41	310.00'	06°16'52"	33.98'
C 42	310.00'	12°35'17"	68.11'
C 43	310.00'	16°16'05"	88.02'
C 44	310.00'	35°08'14"	190.11'
C 45	50.00'	56°48'09"	49.57'
C 46	50.00'	58°50'31"	51.35'
C 47	50.00'	55°21'57"	48.32'
C 48	50.00'	47°44'50"	41.67'
C 49	50.00'	59°31'26"	51.94'
C 50	50.00'	278°16'53"	242.85'
C 51	310.00'	14°54'11"	80.63'
C 52	310.00'	13°51'43"	75.00'
C 53	310.00'	15°09'00"	81.97'
C 54	310.00'	71°38'20"	387.60'
C 55	25.00'	27°48'31"	12.13'
C 56	50.00'	42°50'00"	37.38'
C 57	50.00'	44°52'32"	39.16'
C 58	50.00'	45°07'28"	39.38'
C 59	50.00'	265°40'00"	231.84'
C 60	310.00'	16°55'36"	91.58'
C 61	310.00'	13°50'10"	74.86'
C 62	310.00'	04°39'47"	25.23'
C 63	310.00'	35°25'33"	191.67'
C 64	360.00'	11°28'07"	72.06'
C 65	360.00'	11°50'23"	74.39'
C 66	360.00'	13°03'54"	82.09'
C 67	360.00'	36°22'24"	228.54'
C 68	25.00'	42°50'00"	18.69'
C 69	50.00'	43°14'48"	37.74'
C 70	50.00'	45°00'00"	39.27'
C 71	50.00'	44°53'45"	39.18'
C 72	50.00'	178°08'33"	155.46'
C 73	300.00'	44°35'12"	233.46'
C 74	50.00'	265°40'00"	231.84'
C 75	430.00'	10°35'25"	79.48'
C 76	250.00'	09°47'09"	42.70'
C 77	250.00'	22°55'06"	100.00'
C 78	25.00'	09°42'05"	4.23'
C 79	25.00'	33°07'56"	14.46'
C 80	25.00'	42°50'00"	18.69'
C 81	50.00'	64°04'43"	55.92'
C 82	50.00'	45°50'12"	40.00'
C 83	50.00'	265°40'00"	231.84'
C 84	250.00'	180°00'00"	785.40'
C 139	150.00'	9°47'09"	25.62'
C 140	150.00'	22°55'06"	60.06'
C 141	150.00'	21°14'42"	55.62'
C 142	150.00'	45°50'12"	120.00'

LEE'S CROSSING #2

